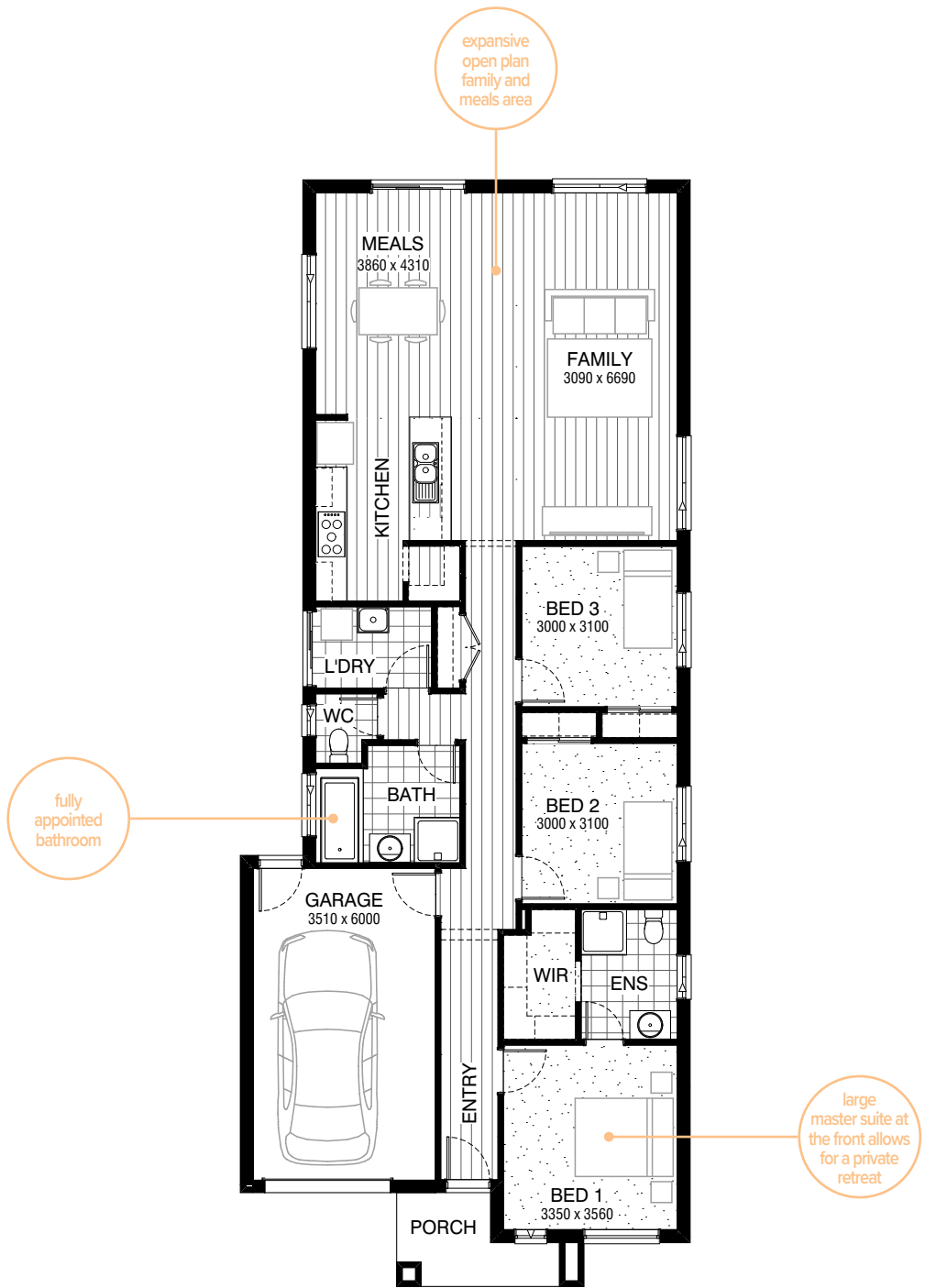


# CALWELL SWIFT 160

Fits min lot width **10.0m**  
Fits min lot depth **28.0m**

Total squares **17.3sq**

 **3**  **2**  **1**



If your home needs to fit a compact 10 metre block, the Calwell Swift 160 will fit the bill. Its sleek lines look great from the street, while giving you space in all the right places. Life will be a dream here, thanks to the front main bedroom suite which can be neatly blocked off to create a comfortable retreat and the open-plan living at the rear, will have you entertaining until your heart's content.

<b>Facades available:</b>	
Arkley, Drysdale, Haring	
<b>Overall home width</b>	<b>8.63m</b>
<b>Overall home length</b>	<b>21.23m</b>

Residence	132.2m <sup>2</sup>	14.2sq
Garage	23.7m <sup>2</sup>	2.6sq
Porch	4.7m <sup>2</sup>	0.5sq
<b>Total</b>	<b>160.6m<sup>2</sup></b>	<b>17.3sq</b>

Listed details based on Drysdale facade floorplan (illustrated)  
^ This design is suitable for small lot housing code